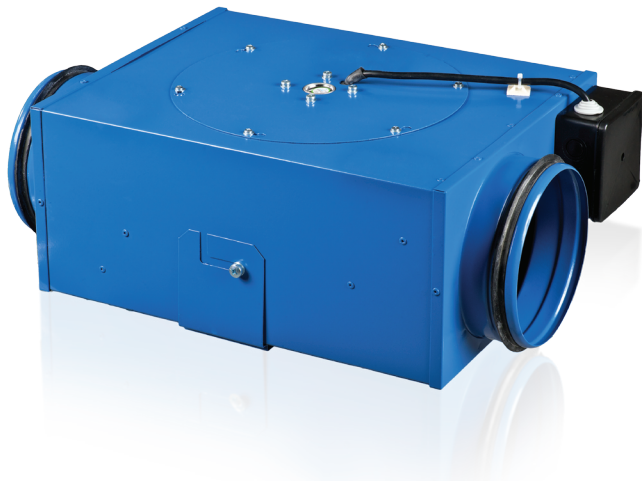


VKP CENTRIFUGAL SERIES

- Application**
The **Fanco VKP series** are designed for supply and exhaust ventilation of premises requiring high pressure and powerful airflow. The fans are compatible with round duct with models in sizes 100mm and 150mm. The fan casing is made of steel with polymeric coating. The size of the unit means its a perfect choice when space is limited.
- About the motor**
All motors are equipped with a single phase motor. All motors have thermal overheating protection, ball bearings which ensure a motor life expectancy of 40,000 hours at non stop operation. The motor is IPX4 rated.



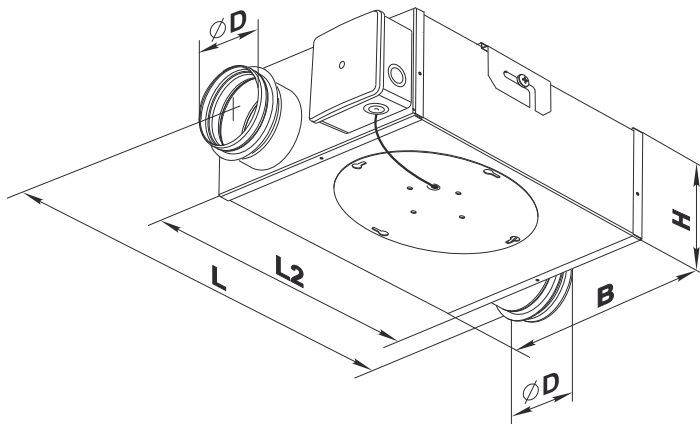
| SKU | Description |
|------------|----------------------------------|
| EXVUVKP100 | VKP 100mm Centrifugal Inline Fan |
| EXVUVKP150 | VKP 150mm Centrifugal Inline Fan |

Speed Controller



This fan can be used with the ESVURS1 speed controller

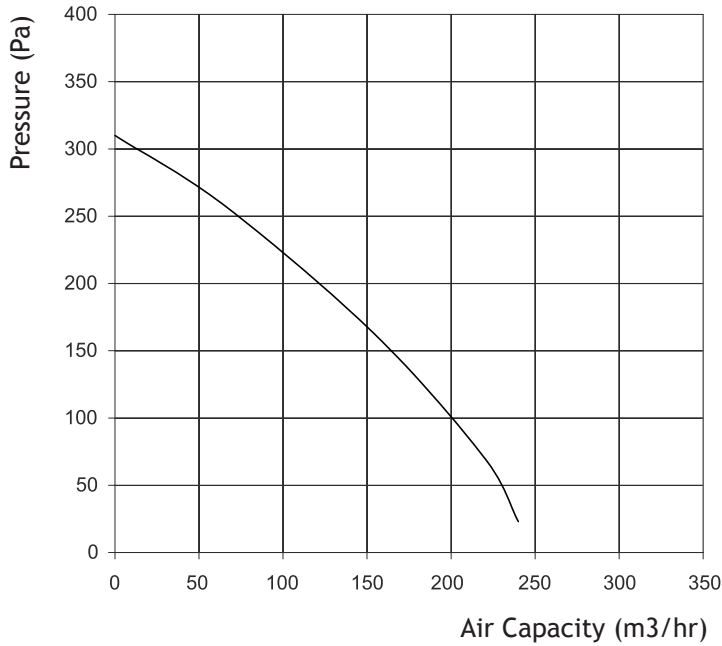
Fan Overall Dimensions (mm)



| SKU | D | B | H | L | L2 |
|------------|-----|-----|-----|-----|-----|
| EXVUVKP100 | 99 | 252 | 133 | 420 | 321 |
| EXVUVKP150 | 149 | 305 | 170 | 480 | 382 |

EXVUVKP100 - VKP 100mm Centrifugal Inline Fan

| | |
|-------------------------|--------|
| Voltage | 230 |
| Power (W) | 58 |
| Current (A) | 0.26 |
| Capacity (m3/hr) | 240 |
| Capacity (l/s) | 66.72 |
| Capacity (CFM) | 141.36 |
| RPM (min-1) | 2500 |
| Noise Level at 3m (dBA) | 47 |
| Max air temp (°C) | 50 |
| Protection rating | IPX4 |



EXVUVKP150 - VKP 150mm Centrifugal Inline Fan

| | |
|-------------------------|--------|
| Voltage | 230 |
| Power (W) | 85 |
| Current (A) | 0.38 |
| Capacity (m3/hr) | 553 |
| Capacity (l/s) | 153.73 |
| Capacity (CFM) | 325.71 |
| RPM (min-1) | 2600 |
| Noise Level at 3m (dBA) | 50 |
| Max air temp (°C) | 40 |
| Protection rating | IPX4 |

